

*transalpin* presenting “living in a box”



Björn Blisse

Folker Königbauer

Reinhard Zetsche

“living in a box” is based on the new material WOOD.E, which received the “Materialica Design Award 2004”, as well as the “Best of Idea” on the fair in munich.

Contact Germany

Reinhard Zetsche - Munich  
+49\_89\_51 99 70 80

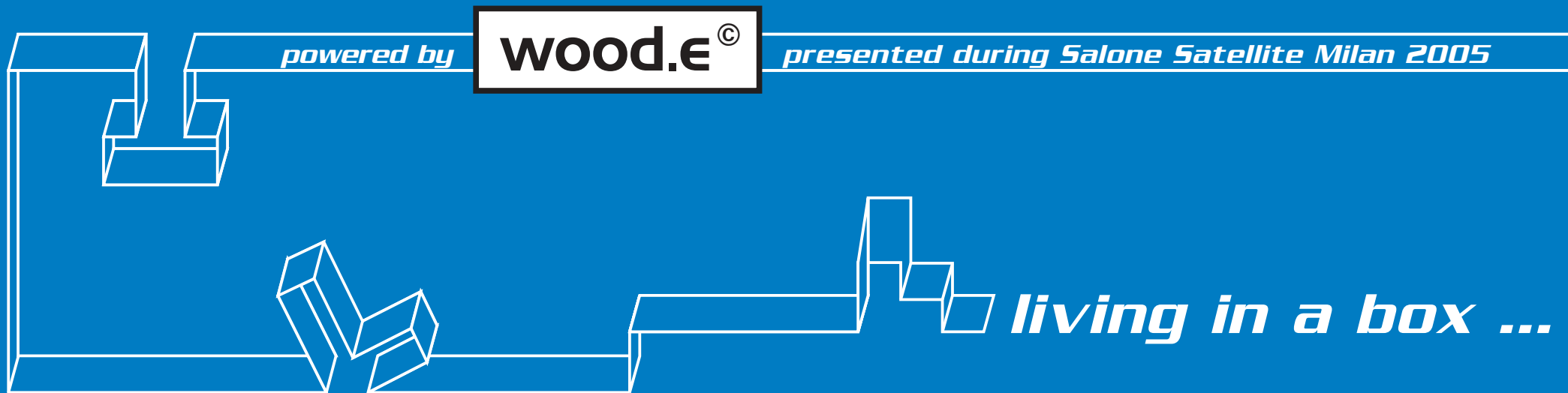
Folker Königbauer - Mindelheim  
+49\_8261\_6941  
f.koenigbauer@transalpin.net

Contact Italy

Björn Blisse - Milan  
+39\_347\_88 99 052  
b.blisse@transalpin.net

trans|alpin

# *The project* in Milan



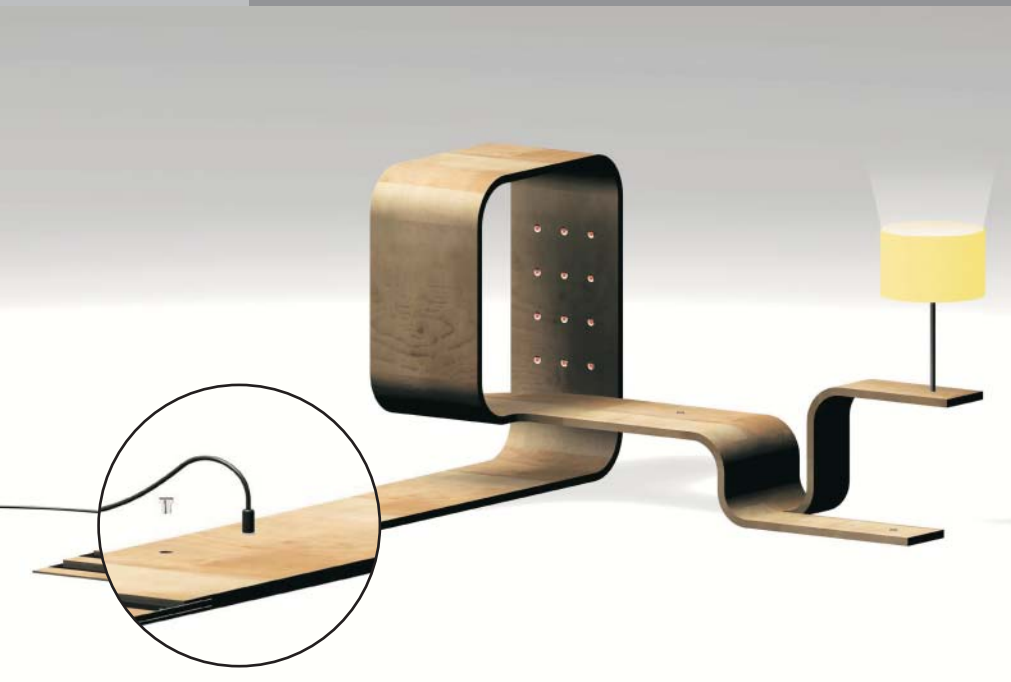
The project „living in a box” is a furniture system made out of WOOD.E, which demonstrates the potential of this material. Stand alone furniture, like chairs, tables, lamps and a shelves, create symbiotic relationships that are not possible with ordinary wood or metal. These previously isolated objects can now become multi-functional as furniture, lighting and space defining dividers.

A space in the space, or simply: „living in a box”

trans|alpin

**wood.€<sup>©</sup>**

**wood.e** basic material for “living in a box”



**M** DESIGN  
AWARD  
MATERIALICA 2004

best of idea

The award winning WOOD.E, a new plywood-like material, is 'electrifying' contemporary 21st century livingrooms. Furniture made of WOOD.E, with an electrical current of 12V, permits you to easily plug in different applications (plug and play). Light, sound or motion, you can place it everywhere you want! This is possible thanks to the two intergrated conducting layers, which characterize the WOOD.E material.

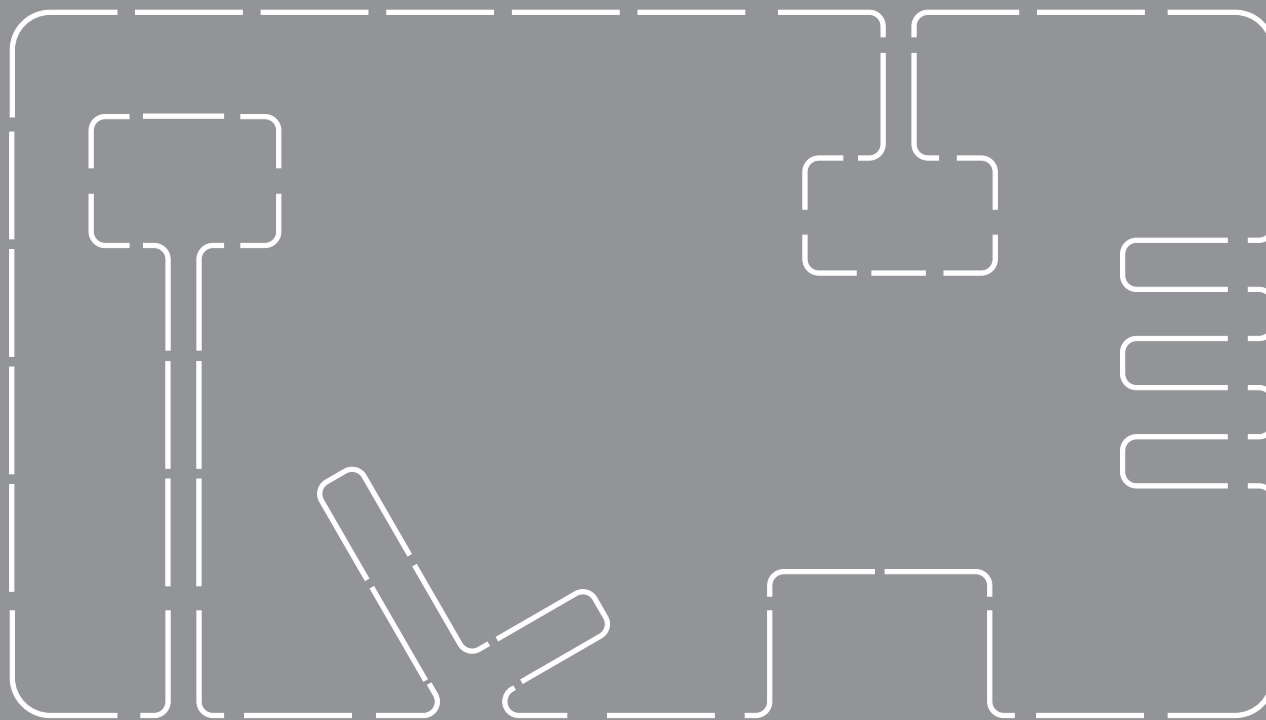
WOOD.E are preformed wooden elements with 2 layers, which can be electrified.

One plug will be supplied with 12V low voltage and the other plugs, which can be distributed anywhere, you can plug in other elements, like lamps, ventilators or sockets.

trans|alpin

**wood.€<sup>©</sup>**

# *Furniture-system* the elements



“living in a box” was implemented with at least 8 different elements, but only 3 different tools were necessary to produce these preformed wooden elements.

8 different elements to create  
your own idea about furnishing  
your home ... plug your life!



trans|alpin

# *The design*

To give you an idea about the creative possibilities of WOOD.E, we designed the prototype "living in a box" for milan.

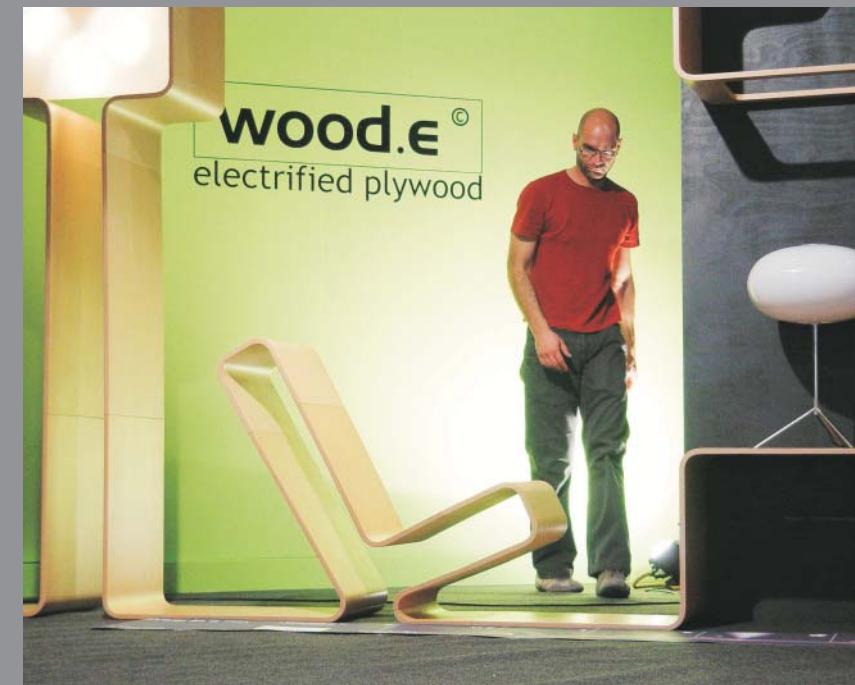
Supported by



The design and the different elements of "living in a box": chair, table, shelf and lamps.

trans|alpin

## *Our booth* in Milan 2005



Thanks to all the people, who supported our idea of “living in a box” to make this project come true. Thanks to all the visitors in milan for their interest and last but not least the journalists, who made this project public all over the world.

## *Detail* lamp and chair



Folker Königbauer and Björn Blisse in Milan, discussing further options to improve this system in detail.

trans|alpin

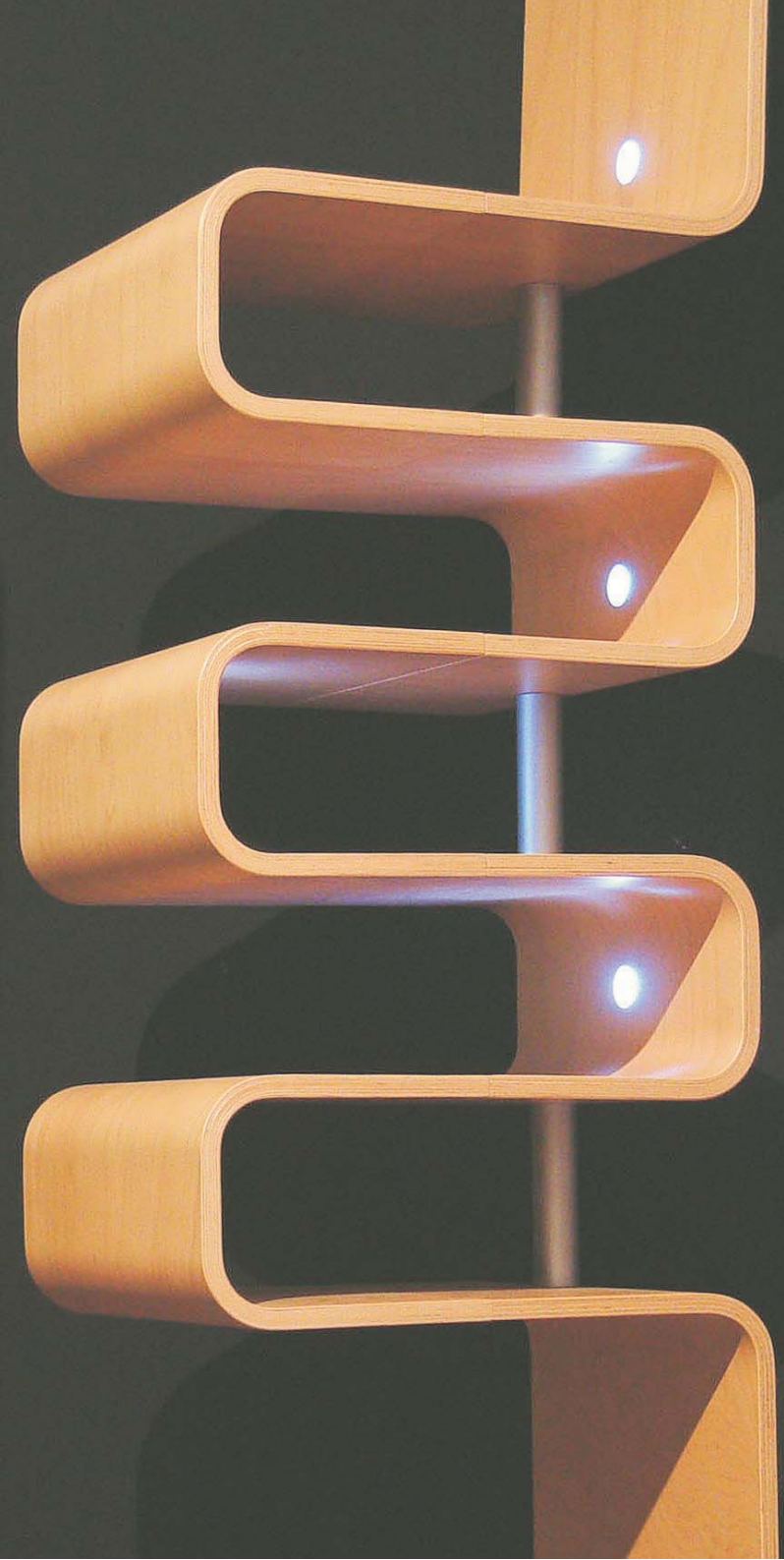


## *Shelf* with integrated LEDs



Detail of WOOD.E with the 2 electrified layers. The LED-sockets are directly connected to the layers and therefore cables are not necessary.

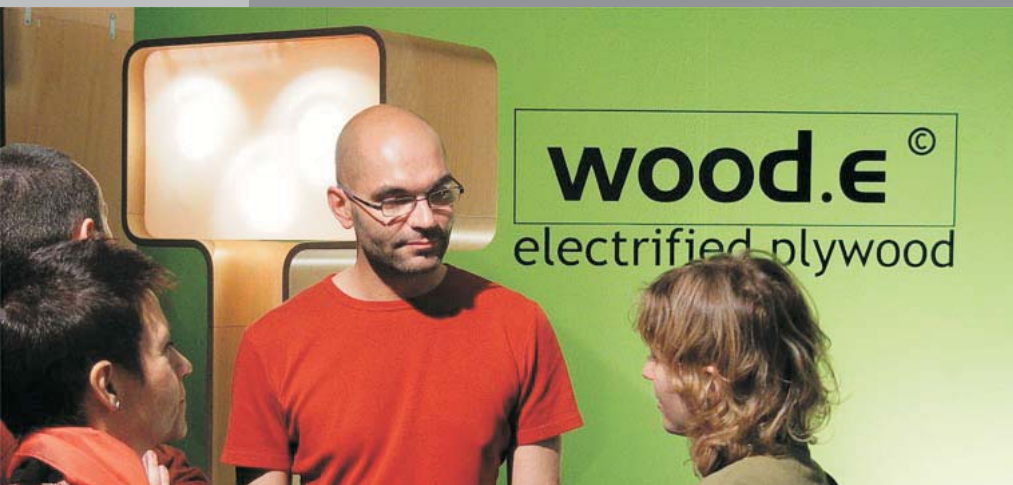
trans|alpin



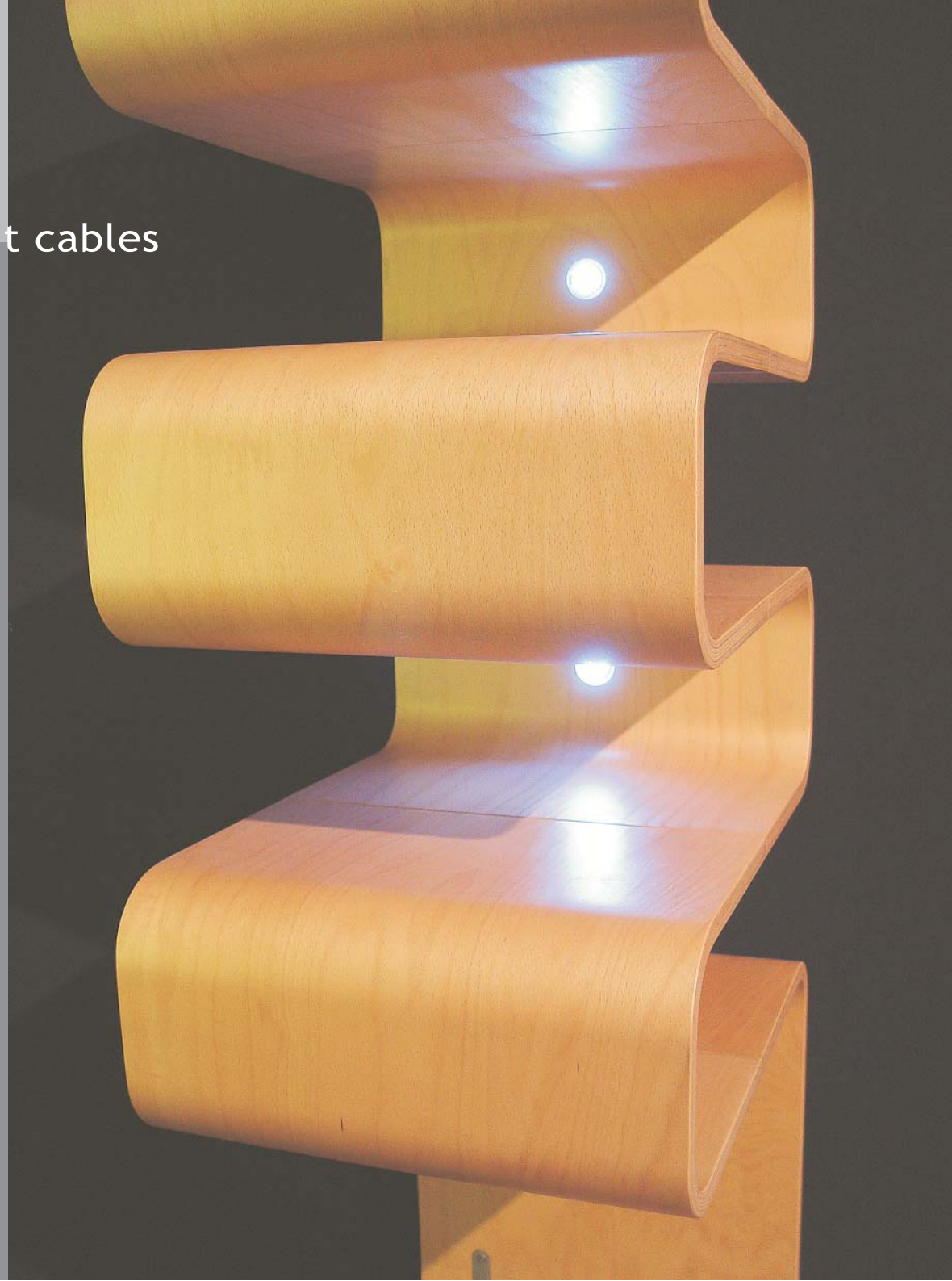


# *LED-sockets* without cables

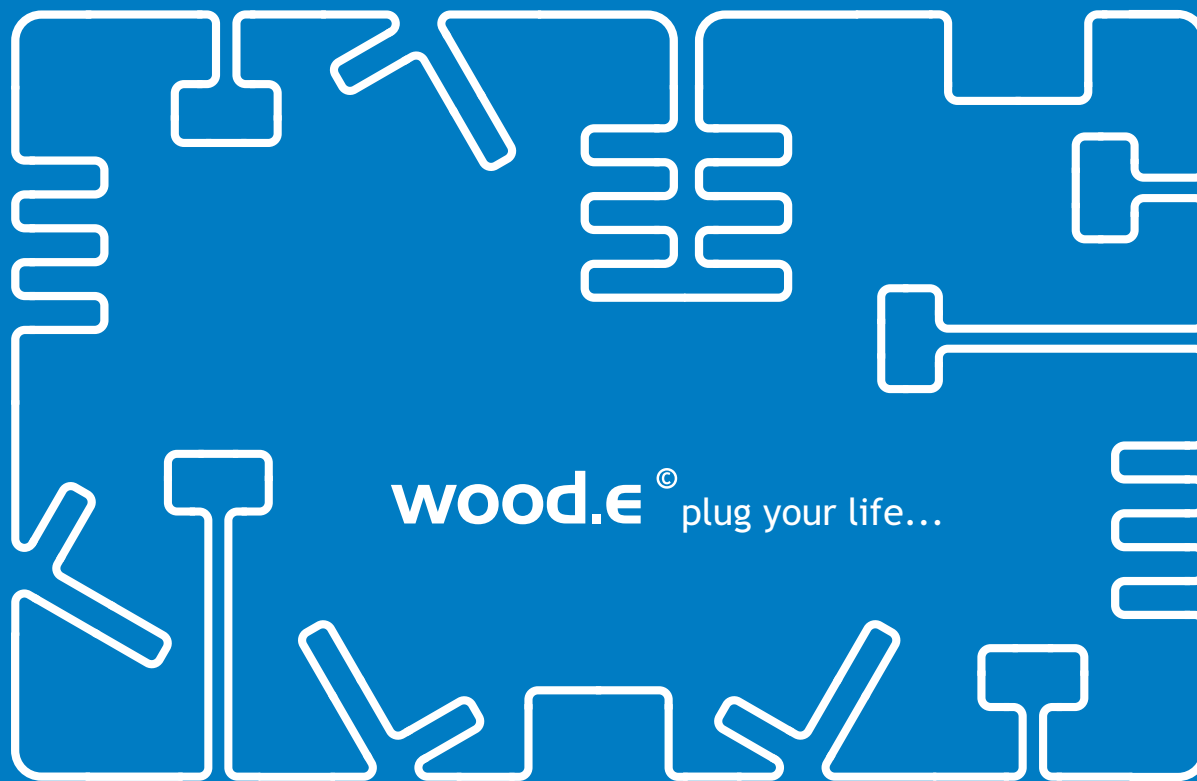
The design of our prototype took the attention of many visitors. However the material of WOOD.E needed to have some more explanations to realise the innovation in this project.



trans|alpin



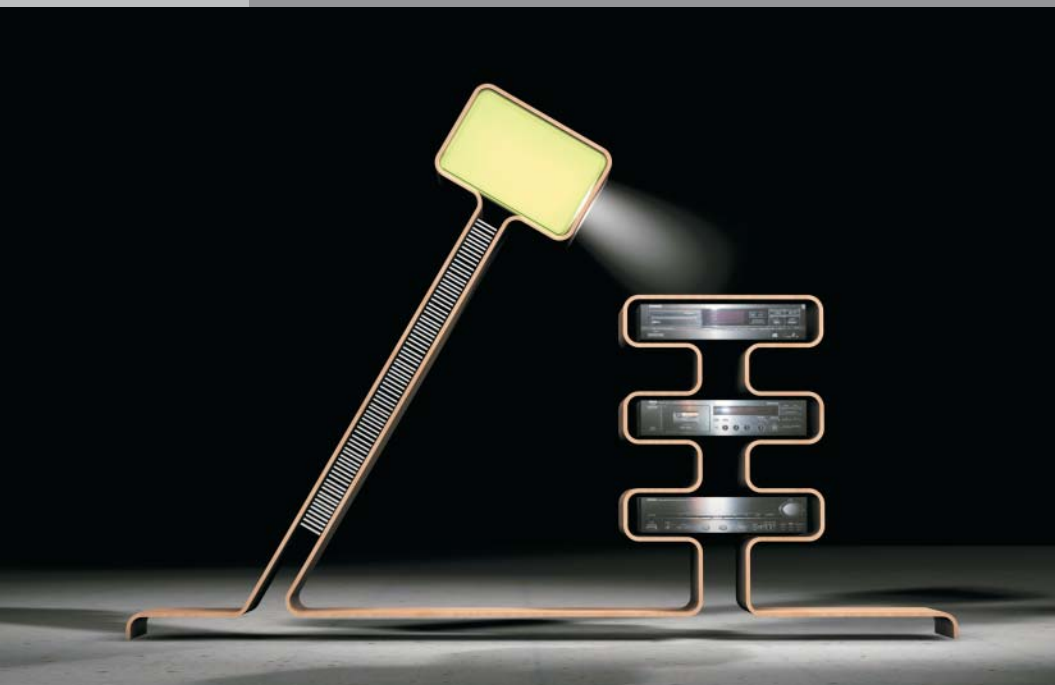
***The furniture system*** of boundless ideas



8 different elements to create your own idea about furnishing your home ...

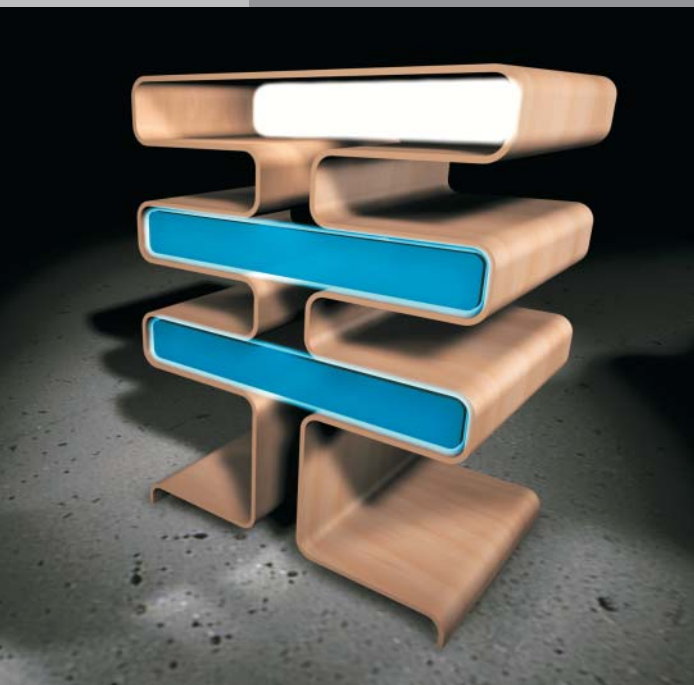
trans|alpin

# *Hifi-furniture* with CD-rack



Furniture for HiFi-systems and lighted CD storage with integrated TFT-information-display

# *Furniture* and storage



system-furniture with backlit drawers, shelves and assorting elements

# *Leasure couch*



... made of WOOD.E, with integrated speaker-system

trans|alpin

*You need more* information/print data



Björn Blisse

Folker Königbauer

Reinhard Zetsche

... or our innovative team to support your products. Just give us a call or send an email.

Contact Germany

Reinhard Zetsche - Munich  
+49\_89\_51 99 70 80

Folker Königbauer - Mindelheim  
+49\_8261\_6941  
f.koenigbauer@transalpin.net

Contact Italy

Björn Blisse - Milan  
+39\_347\_88 99 052  
b.blisse@transalpin.net

trans|alpin